

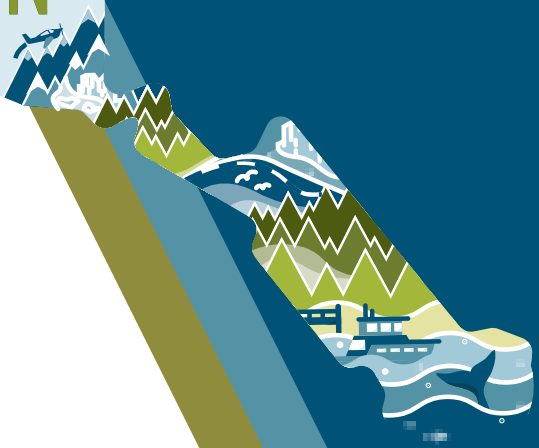


# SOUTHEAST ALASKA

TRANSPORTATION PLAN

## DOT&PF Risk-Resiliency Workshop

Planning for Future Transportation  
Strategies



February 24, 2026

# WORKSHOP PURPOSE AND GOALS



## Purpose

Gather input on transportation infrastructure risks and future transportation strategies for Southeast Alaska to inform the SEATP Update.

## Goals

- Identify and assess vulnerable transportation infrastructure.
- Identify mitigation strategies and actions for SEATP recommendations.





# AGENDA

- **1:00 to 1:30 PM — Welcome & Overview:**
  - Introductions
  - Purpose and status of the SEATP Update
- **1:30 to 2:00 PM — Roundtable Discussion:**
  - DOT&PF Staff top concerns related to risk and resilience
- **2:00 to 4:00 PM — Hazard-Infrastructure Assessment Exercise**

*Approximate session timing:*

  - 2:00 to 2:20 PM – Roadways
  - 2:20 to 2:40 PM – Bridges
  - 2:40 to 3:00 PM – Active Transportation and Transit
  - 3:00 to 3:15 PM – Break
  - 3:15 to 3:35 PM – Airports
  - 3:35 to 3:55 PM – Ferry Terminals
- **4:00 to 4:20 PM — Roundtable Discussion on Population and Funding Considerations**
- **4:20 to 4:30 PM — Closing Remarks**

# OVERVIEW



## What is the Southeast Alaska Transportation Plan (SEATP)?

- The updated Southeast Alaska Transportation Plan will guide transportation improvements for the next 20 years. It looks at both travel between communities and local needs that affect the region.
- The plan covers all types of transportation - roads, ferries, airports, trails, to help direct future public investments.
- Area transportation plans identify community priorities and potential projects to meet those needs.
- These plans also help inform the Statewide Transportation Improvement Program (STIP), which funds transportation projects across Alaska.



# DOT&PF FAMILY OF PLANS



# WHAT THE PLAN CAN DO



## The SEATP Update Can:

- Set goals that guide Alaska DOT&PF's transportation investment priorities within the region
- Describe unique transportation characteristics, trends, and other factors that are projected to influence the needs of the region's transportation system over a 20-year planning horizon
- Identify and capture key transportation needs in all modes for community and agency use in advocating for, planning for, programming, and funding improvements.
- Recommend projects, programs, and policies of greatest regional significance and identify recommended funding and implementation strategies.

## The SEATP Update Cannot:

- Change future land use
- Change ferry, transit, or air service levels, schedules, or fares
- Change the posted speed limit on roads in the region
- Guarantee project funding
- Design projects
- Make decisions or set priorities for local or tribal transportation infrastructure

## What We've Done...

- ✓ Scope and schedule for the remainder of the plan confirmed
- ✓ Public Involvement Plan completed:
  - Website launched
  - Fact sheets and other engagement materials developed
- ✓ Existing Conditions Report published
- ✓ Population and economic updates advanced
- ✓ Public Meetings:
  - Two in-person (Ketchikan and Juneau), Two virtual
- ✓ Small Group Meetings & Conferences:
  - Southeast Conference Annual Meeting & Workshop
  - AML Conference
  - Tribal Engagement Meeting

## What's Up Next...

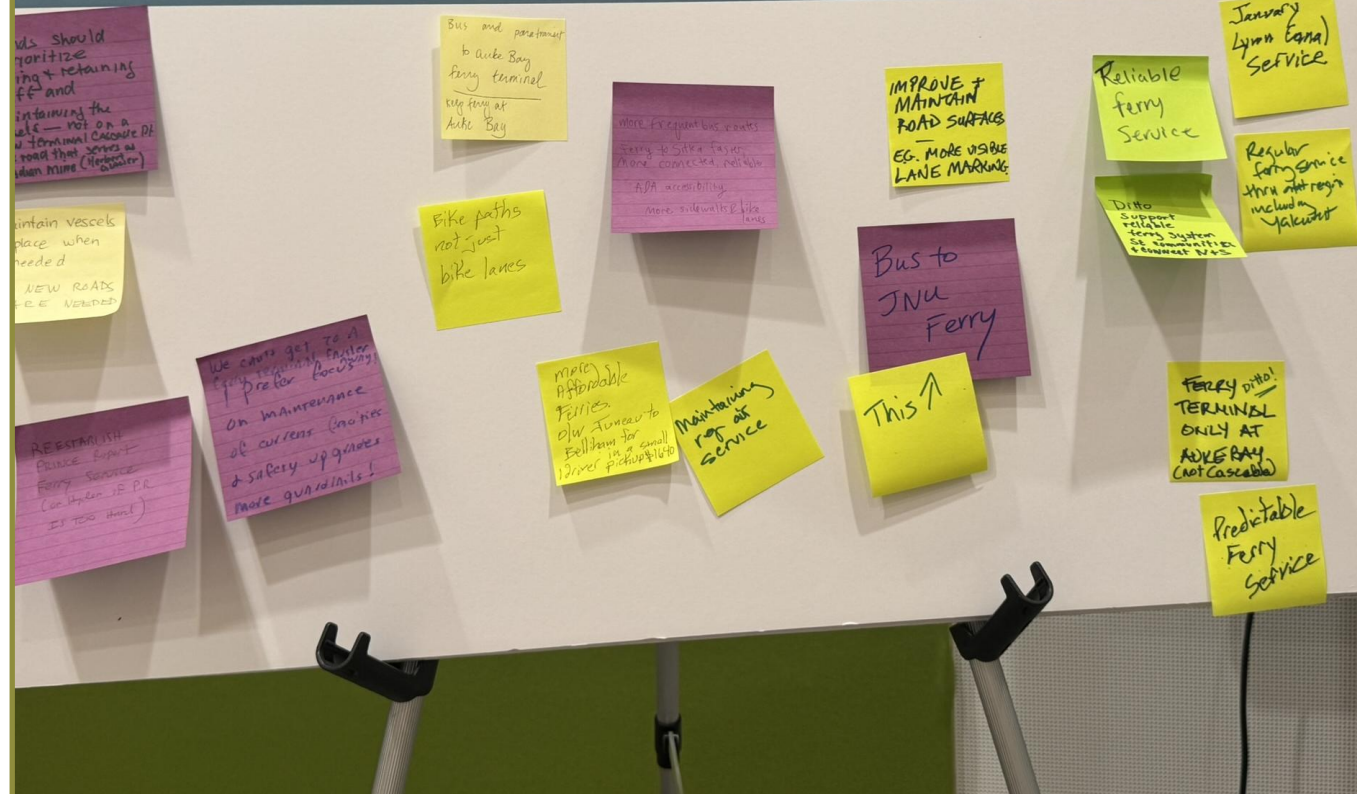
- Transportation System Analyses & Plan Alignment
  - Coordinate with AMHS Long-Range Plan, 10-Year Plan, Statewide LRTP, and other relevant plans
- Mid-Plan Updates
  - Southeast Conference Mid-Session Summit
  - DOT&PF Risk-Resiliency Workshop
  - Tribal & Community Meetings
  - Additional conference opportunities

# WHAT DID WE HEAR?



- Transportation Reliability and Connectivity
- Infrastructure – Maintenance and Resiliency
- Community and Tribal Engagement
- Environmental and Sustainability
- Safety and Accessibility
- Air and Ferry Service
- Active and Public Transportation
- Economy and Freight
- Lynn Canal Projects – Cascade Point and Chilkat Connector

## What are your top transportation priorities for your community?





# PROPOSED VISION STATEMENT

*An integrated land, air, and marine transportation system that provides safe and equitable access, fosters economic growth, provides efficient and cost-effective intermodal connections, and remains resilient and well-maintained.*





# PROPOSED GOALS



## **Safety and Accessibility:**

Provide safe and equitable access to transportation for all communities in Southeast Alaska



## **Economic Vitality:**

Support regional economic growth by enhancing transportation infrastructure and services that facilitate commerce and tourism.



## **System Reliability:**

Improve the reliability of air, marine, and land transportation systems to ensure consistent and dependable service.



## **Resilience and Preservation:**

Support a transportation system that remains resilient to hazards and is maintained in a state of good repair for long-term sustainability. .



## **Cost-Effective System:**

Strengthen intermodal connections between land, air, and marine modes to create an integrated and efficient transportation network.



# STEPS AND SCHEDULE

- **Defining Vision, Goals, and Objectives**
- **Data Verification and Analysis**
  - Economic and population forecast updates
  - Transportation system analyses
- **Issues and Needs**

- **Resiliency Analysis**
- **Needs Identification and Prioritization**
- **Implementation Strategies**
- **Developing Draft Plan**

- **Draft Plan-Out for Public Comment**
- **Final Plan Anticipated November 2026**

**Fall 2025 - Winter 2026**

**Spring - Summer 2026**

**Fall 2026**

- **Sharing Information and Seeking Feedback**  
Round 1 Outreach Meetings
  - Southeast Conference Annual Meeting
  - Community Meetings
  - Virtual Meetings

- **Sharing Information and Seeking Feedback**  
Round 2 Outreach Meetings
  - Southeast Conference Mid-Session Summit
  - Small Group Meetings

- **Sharing Information and Seeking Feedback**  
Round 3 Outreach Meetings
  - Southeast Conference Annual Meeting
  - Community Meetings
  - Virtual Meetings

★ **WE ARE HERE**

**Agency, Community, and Interested Party Involvement**  
Throughout Plan Update Process



# RISKS



Natural Hazards, Weather Events



Funding



Population

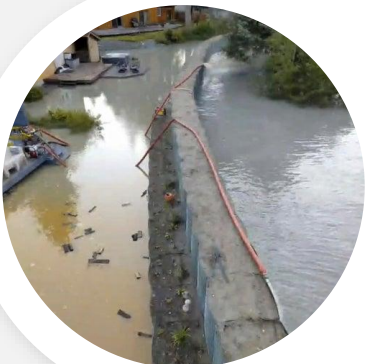


# WEATHER EVENTS



*The deadly landslide that crashed through the outskirts of Wrangell on the night of Nov. 20, 2023, is seen from the air on the following day.*

*-Photo provided by Alaska Department of Transportation and Public Facilities*



*Flooding from a release of water and snowmelt at Mendenhall Glacier covered some roads and threatened homes along the Mendenhall River in Juneau, Alaska on Wednesday, Aug. 13, 2025*

*- City and Borough of Juneau via AP*



*Heavy snowfall is piled up on Main Street in the town of Haines, Alaska on Dec. 28, 2025.*

*-Courtesy Rachelle Galinski*



# HAZARD-INFRASTRUCTURE ASSESSMENT

- **Hazards identified in the State of Alaska Hazard Mitigation Plan (SHMP) include:**
  - Earthquake
  - Erosion
  - Flood
  - Ground Failure, Landslide, Avalanche
  - Severe Weather
  - Tsunami
  - Volcano
  - Wildfire
- **The Federal Highway Administration's (FHWA's) Vulnerability Assessment and Adaptation Framework provides methodology to assess vulnerability of transportation infrastructure and systems to extreme weather and climate effects.**
- **This framework has been adapted to assess the hazards identified in the SHMP.**

Exposure	Sensitivity	Adaptive Capacity
Exposure refers to whether the asset or system is located in an area experiencing direct effects of hazards.	Sensitivity refers to how the asset or system fares when exposed to a hazard	Adaptive capacity refers to the system's ability to adjust to or cope with existing hazard variability or future impacts.

# FACILITY RECOMMENDATIONS



Key mitigation strategies identified in the SHMP include:

- Protect in Place
- Accommodate
- Managed Retreat

Mitigation Strategies	
Protect in Place	<p><b>Based in</b> engineering or planning solutions or practices that keep the threat/hazard at a manageable level. These practices can be person-made or based in the natural environment.</p> <p><b>Often seen as</b> working in community outreach and education, environmental restoration, safety committees and policy boards, and implementation of management plans.</p> <p><b>Requires</b> identification of hazards and at-risk locations, collaboration with federal and non-profit emergency management organizations, and community outreach.</p>
Accommodate	<p><b>Ways to</b> enhance the infrastructure and community in a way that allows the threat to continue but keeps extreme damage from happening.</p> <p><b>Often seen as</b> implementing engineering practices to stabilize, maintain, and prepare for what could happen.</p> <p><b>Requires</b> funding for robust inspections of infrastructures, staff to preform inspection, engineering staff to design and implement safe and effective designs, staff for construction, and collaboration with federal and non-profit emergency management organizations.</p>
Managed Retreat	<p><b>Works to</b> permanently move infrastructure away from the threat completely often after exhausting all other efforts.</p> <p><b>Often seen as</b> a whole community moving at once, not single pieces of infrastructure moving. It is an emotionally tolling choice for a community to make as it forever changes the community.</p> <p><b>Requires</b> community cooperation, collaboration, funding, and available resources.</p>

# Hazard-Infrastructure Assessment Activity

DOTPF Risk-Resiliency Workshop  
Roadways



IDENTIFY FACILITY <input type="button" value="v"/>	COMMUNITY <input type="button" value="v"/>	IDENTIFY HAZARD <input type="button" value="v"/>	EXPOSURE <input type="button" value="v"/>	SENSITIVITY <input type="button" value="v"/>	ADAPTIVE CAPACITY <input type="button" value="v"/>	MITIGATION STRATEGIES <input type="button" value="v"/>	POTENTIAL ACTION <input type="button" value="v"/>

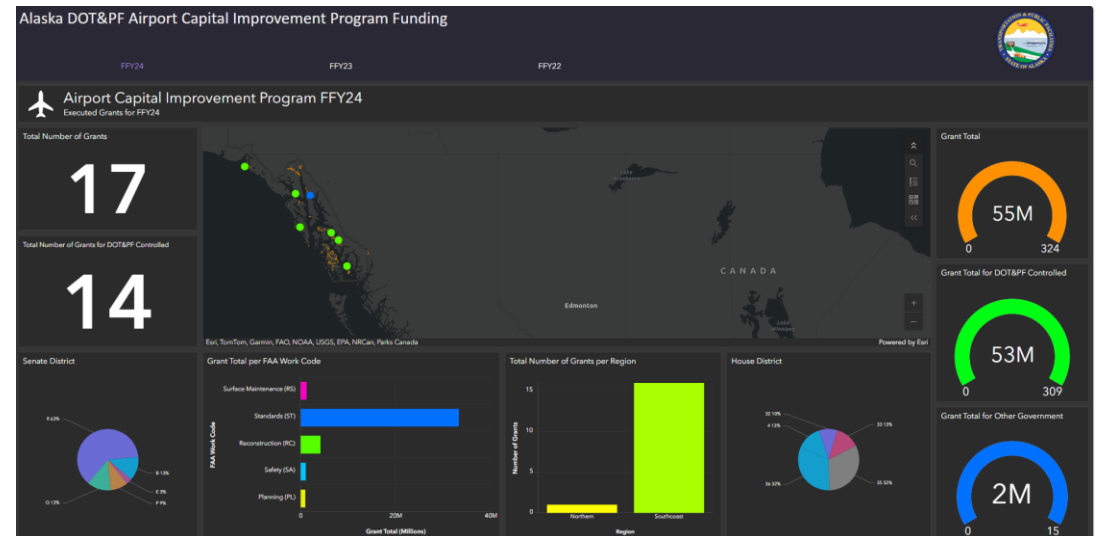
# FUNDING



- The Infrastructure Investment and Jobs Act (IIJA) expires on September 30, 2026.
- The FAA Reauthorization Act of 2024 runs through September 30, 2028.
- Some grant programs face uncertainty now (Ferry Service for Rural Communities) and continuing uncertainty pending reauthorization.



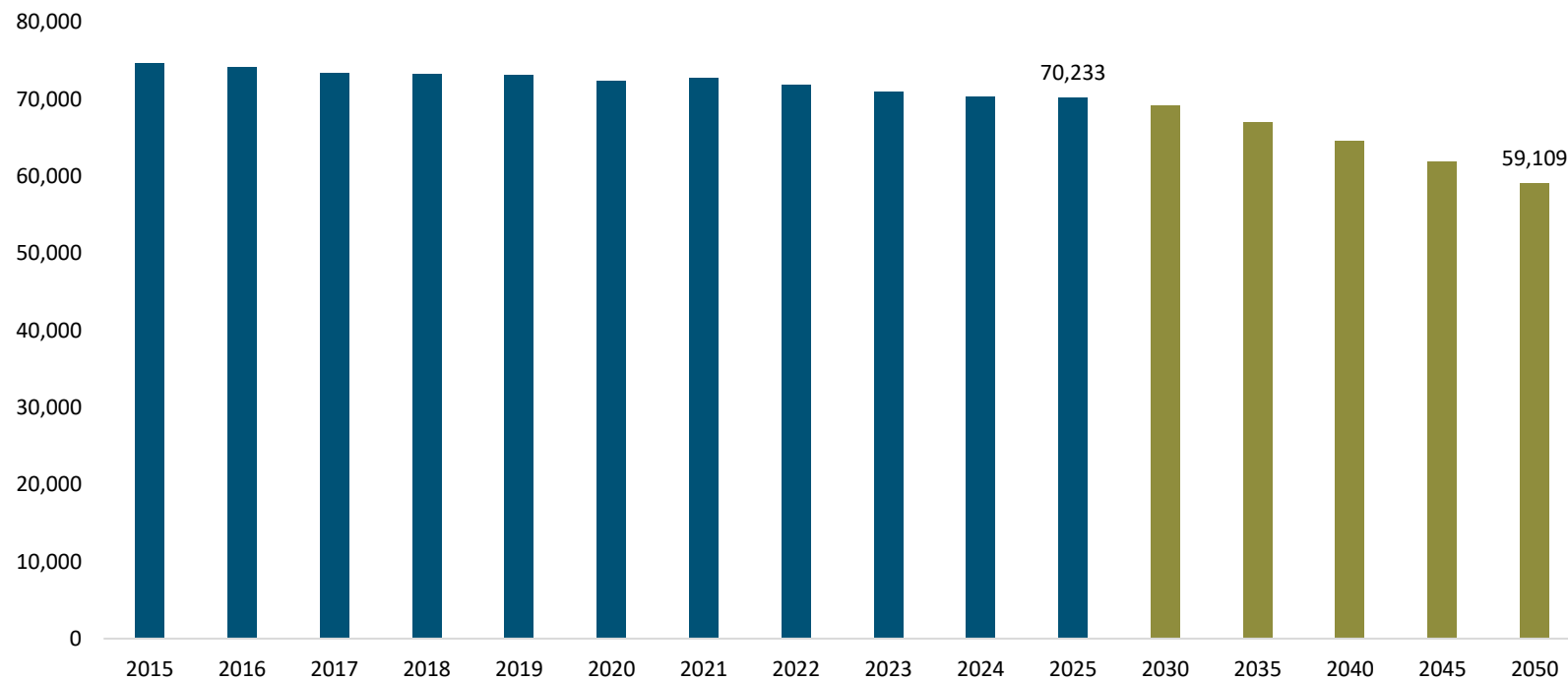
**Safe Streets & Roads for All Grant**  
It's time to go Big & Bold for Vision Zero



# POPULATION



Southeast Alaska Population Projections



# WAYS TO GET INVOLVED

Reach out to the Planning Team with any comments or concerns

- **Jill Melcher**  
DOT&PF Project Manager  
(907) 465-4445
  - **Renee Whitesell**  
DOWL Project Manager  
(907) 562-2000
  - **DOWL Public Involvement**  
(907) 562-2000
- ✉ **Email:** [SEATP@dowl.com](mailto:SEATP@dowl.com)
- 💻 **Website:** [www.southeastalaskatransportationplan.com](http://www.southeastalaskatransportationplan.com)

Keep an eye out for public meeting opportunities



For more information, scan the QR Code

